

the SNOW DRAGON

Lighting Plan

Director: Toby Mitchell

Designer: Polly Sullivan

Lighting Designer: Will Evans

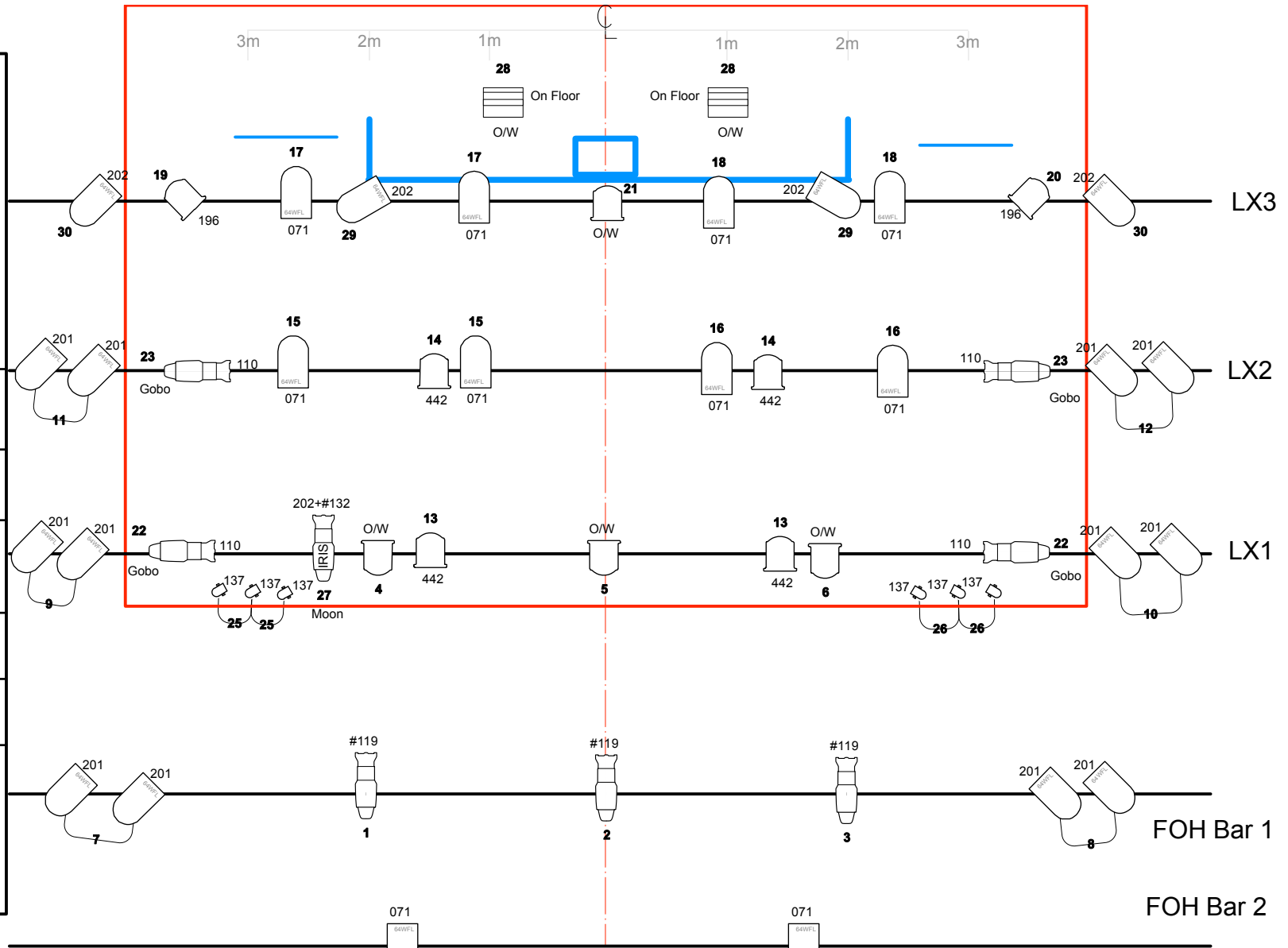
Scale: 1:50 @A4

Date: 08/12/14 **VS:** TOUR



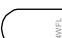


This drawing and the design it represents are copyright and licensed only to this production, for the duration of the period

© Will Evans 2014

www.willevans.co.uk

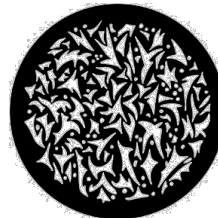


Key

-  1K (or Source Four equiv) Narrow Zoom Profile
-  1.2Kw Fresnel
-  Par 64 CP62
-  Birdie (Toured)
-  500w Flood

For smaller venues a smaller rig can be provided please contact the Tall Stories office on 020 83480080 or the Company Stage Manager.

Gobo: 77785
Sharp B'up (Med)



Other Things

- 31** Lamp shades
- 32** Eyes
- 33** Fairy Lights