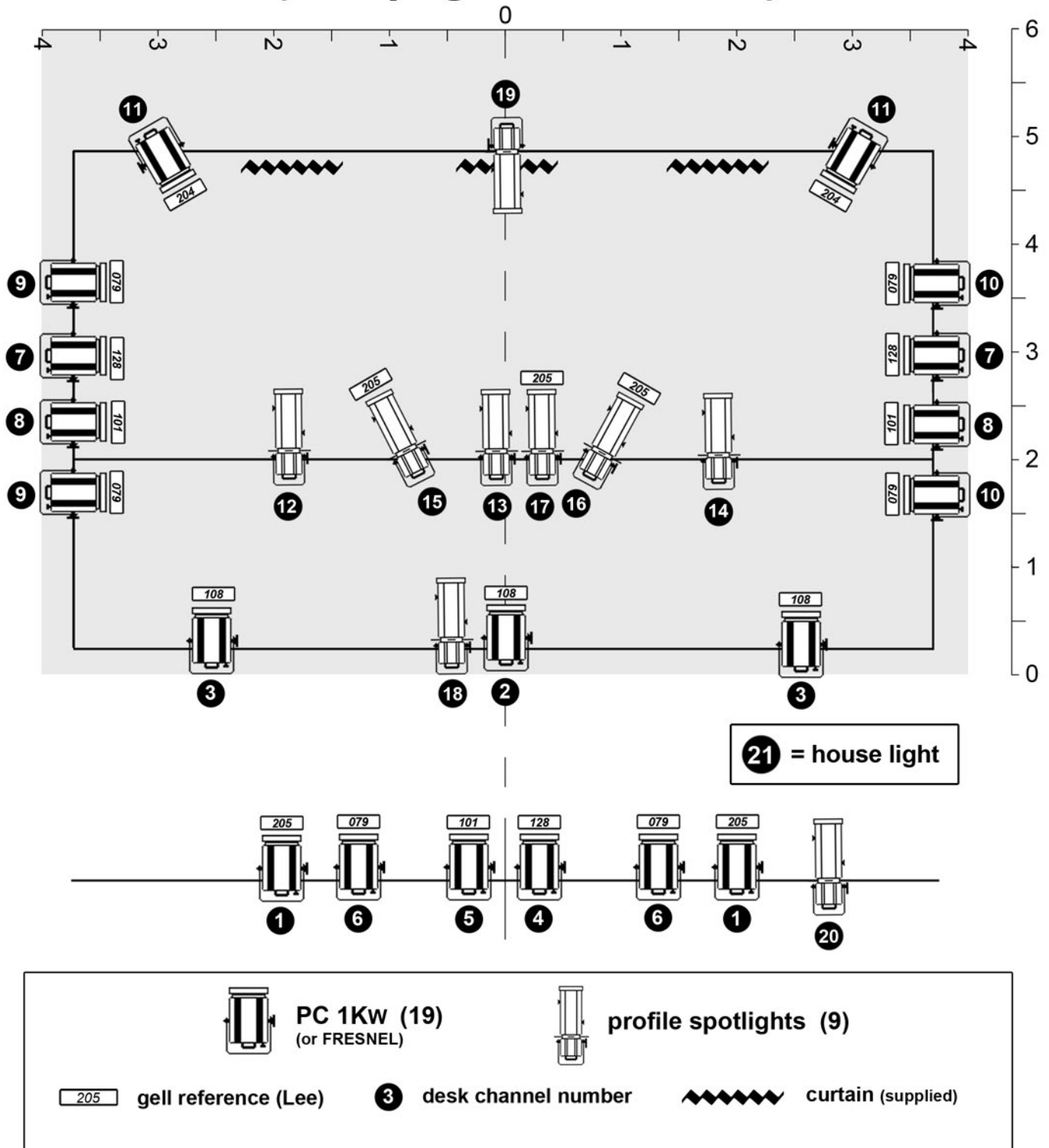


WAR OF THE BUTTONS

(Compagnie Animation)



If the lighting is pre-rigged as described above, we need to get in at least 2,5 hours before the first show.
 Compagnie Animation tour with only one technician (doing lighting and sound cues at the same time).
Lighting desk needs to be just next to sound desk.

For the sound, we just need a complete working PA system with at least one stereo input available on your sound desk to plug in our computer.

For the light, this plot is the ideal one (for a venue not too big). If you can do it, it would be great, but if you can't, we won't make a fuss! Just contact me as soon as possible to let me know your usual stage lighting plot and we'll work it out together. **Thank you for contacting me before the show anyway!**

contact : Tristan ASSANT / +33 (0)6 85 34 92 86 / tristan@compagnie-animation.org