

PRESENT

*The Unparalleled Adventure of one
Hans Pfaall*

A fantastical science-fiction solo
adaptation from
Edgar Allan Poe's novel

Synopsis

The unparalleled journey of a bankrupt artisan, Hans Pfaall, who, in an attempt to escape his miserable situation, decides to reach the Moon by way of a giant gas-balloon with the aid of his scientific speculations. During his solitary voyage, where the Moon is his only guide and hope for a new beginning, Pfaall encounters many terrifying dangers and wondrous sights until, after 19 days, his journey comes to an end. Fool's Cap's solo adaptation is a 'visually fascinating portrait of perseverance and rebirth.'

Premiered at the Pleasance Theatre
July.2015, London UK

<https://www.youtube.com/watch?v=URWrrWmCHUk>



Directing Note

Our focus in researching this project was on adapting Literature to Theatre; transforming one art form into another. The text served as a dramaturgical guide, and Corporeal Mime was our physical language. Mixing projection, lights, music and movement, we sought to devise a piece that crosses artistic and language barriers. We looked at Pfaall's journey to the Moon as we look at our own journey as migrants: someone travelling to an unknown world passing through the physical and emotional challenges of such. We thought about mankind and our legacy of always seeking for a 'place' where we will finally feel complete. It's the eternal 'journey towards happiness' and spiritual elevation.

Ramon Ayres & Vini Carvalho

"The Moon tells one fundamental story: birth, growth, fullness, decay, death and rebirth. It is the story of transformation."



Audience's Feedbacks

"A piece of total theatre..."

"Great physicality combined with a clear story telling"

"Beautiful and gentle"

"It's a good example of adaptation, we really feel the desperation of the character as the book proposes"

"It's like a piece of Art"





Past Performances

Jul. 2015 - Pleasance Theatre,
London UK

Jun. 2015 - The Others,
London UK

Jan. 2015 - New Diorama Theatre,
London UK (work-in-progress)

Sept. 2014 - CLAC Centro Livre de Artes Cênicas,
São Paulo BRAZIL(work-in-progress)

Sept. 2014 - Os Geraldos,
Campinas BRAZIL (work-in-progress)

Artistic team

DIRECTORS RAMON AYRES
VINI CARVALHO

PERFORMER..... VINI CARVALHO

MUSIC ALEX PATON

VIDEO DESIGN ELOISE CARLES

LIGHTNING DESIGN ANDRES VELASQUEZ

COSTUME & SET DESIGN IRINA SHENGELIJA

GRAPHIC DESIGN ANDRE MENEZES
ELOISE CARLES

ACTORS IN THE PROJECTION LEONARDO PANCIONE
RONALD LOPEZ

PRODUCTION MAGGIE SHROEDER
EYGLO BELAFONTE

PHOTOGRAPHER MATHEW HODGKIN





Marketing and Target Audience

Fool's Cap has a comprehensive mailing list as well as social media followers around the world who avidly attend Fool's Cap productions. In addition, we use several combinations of paper marketing. They also have a history of beating target audience numbers, having sold over 70% of tickets at the Pleasance Theatre, Islington, London.

Our target audience for this piece are those aged 8-97 who fit into at least one the following categories:

- Frequent theatre-goers.
 - Interested in physical theatre.
 - Interest in steampunk and science fiction; or an interest in the literary works of Edgar Allan Poe.
 - Students, particularly those in primary or secondary school who are studying literature and/or physics.
- Fool's Cap also provide a number of options to help school integrate the production into the curriculum.

Fool's Cap Theatre is an international company based in London and established in 2014 to serve as a place for experimentations in movement and visual theatre. Working with Corporeal Mime technique as a physical language, and combined with skills from a background in Masks and Clowning, Fool's Cap's work is marked by visually striking images and physicality. The creative process focuses on the actor and on his physical relationship with the other elements on stage such as set, costumes, text, music. The result is the creation of an imaginary landscape that moves and transforms the space. Exploring major themes of human nature such as life, death, spirituality, perseverance and love, the story becomes as touching as it is comical, as simple as it is complex. The audience is taken into a dream-like world.

foolscaptheatre.weebly.com **WEBSITE**

www.facebook.com/foolscaptheatre2014 **FACEBOOK**



The Company

Artistic Director

Vini Carvalho is a performer and theatre-maker. He has graduated in Performing Arts from State University of Campinas in Brazil. Moving to London in 2010, he trained Corporeal Mime at the International School of Corporeal Mime and performed with the company Theatre de l'Ange Fou, directed by Steven Wasson and Corinne Soum. Vinicius has studied Masks with Alice K and Tiche Vianna; and Clowning with Leris Colombaione and Roberto Mallet. He has performed in a number of physical theatre companies such as ZeroZero Cia extensively touring the show "O Caderno da Morte" in São Paulo. Vinicius has been teaching Mime and Physical Theatre for the past seven years and he is currently leading regular classes in London. In 2014, Vinicius created his company Fool's Cap Theatre and was awarded with a grant from the Arts Council England to create his solo-show "The Unparalleled Adventure of one Hans Pfaall".

CREDITS: "Quotations from Shakespeare on Parallel Lines" (Arcola Theatre, London), "The Unparalleled Adventure of one Hans Pfaall" (Pleasance Theatre, London), "The City" (Pleasance Theatre, London) and "Streets of Frequency" (Rich Mix, London); "Waiting for Ulysses" and "A Promethean Dream" (Theatre de l'Ange Fou, Wisconsin USA), "O Caderno da Morte" (SESI/SP production and touring, Sao Paulo), "Mirandolina" (TUSP, Sao Paulo), "Numeros" (Os Geraldos, Campinas), "Morte e Vida Severina" - Lei de Fomento de Sao Paulo (TUSP, Sao Paulo).

TEACHING: "Corporeal Mime Technique: building the actor-marionette" (White Hart Studios - London UK); "Corporeal Mime: in dialogue with gravity" (Os Geraldos - Campinas BRAZIL); "Neutral Mask" (Cia dos Arlequins - Sao Paulo BRAZIL); "The Mime Body" (Oficinas Hilda Hilst - Sumare, BRAZIL)



Show reel: <https://youtu.be/8S4XcsH3KnQ>



Ramon Alyres

(Brazil)
associate artist / director /
performer

Ramon graduated in Theatre from the University of Sorocaba. He published an article in FENIX Theatre Magazine. He accompanied Eugenio Barba during his creative process of "The Chronic Life" at Grotowski Institute. He studied four years at International School of Corporeal Mime



Eloise Carles

(France)
associate artist / performer /
video and graphic design

Eloise is a self taught illustrator and video editor. She uses Photoshop, After Effects and Adobe Premiere to create her projections. Eloise also performed with the company Le Jour se Leve (France), Theatre de l'Ange Fou (USA) and Les Foules (UK) as a physical theatre and dance theatre artist.



Maggie Schroeder

(USA)
associate artist / production

Maggie is the founder and lead producer at MSP and has worked with companies including 2Theatre, ImmerCity, and CoLab in addition to Fool's Cap. MSP publishes monthly a list of self-producing opportunities for theatre



Irina Shengelija

(Latvia)
associate artist /
set and costumes

Irina is a theatre maker. She received a BA in Theatre and Performance at Goldsmiths, University of London, in 2013. Irina has worked for Les Foules, Omnibus Arts Centre, Shunt and Punchdrunk. she presented her work at CASA Latin American Theatre Festival, Battersea Arts Centre and Stratford Circus.

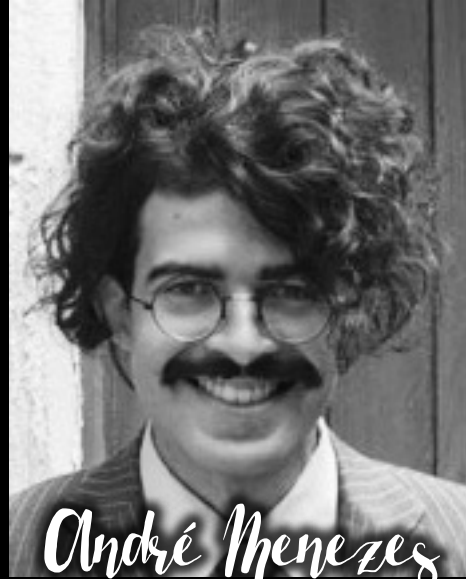
Associate Artists and Collaborators



Andres Velasquez

(Colombia)
Collaborator artist /
lighting designer

Andres is a very creative individual, he is a skilled (and very funny) physical performer who splits his time between doing lighting for movement/ dance based work and developing his own work with his company Invisible Ensemble. He is also TSM for Gecko Theatre.



André Menezes

(Brazil)
collaborator artist /
graphic design

André is an visual artist currently working with sculpture, music and video. He has taken part of several theatre and dance projects since 2006. He is the founder and the art director of Doctela, a film production based in Sao Paulo.



Alex Paton

(UK)
collaborator artist / musician

Alex is a composer and musician, providing bespoke music for film, television and theatre. He studied music and music technology at degree level. His background includes playing in orchestra's, brass bands, folk ensembles and rock & metal bands.



Mathew Hodgkin

(Brazil)
collaborator artist /
photographer

Mathew studied at Focus School where he worked as a photographer assistant for Enio Leite. Since then, he has worked for various short and feature films, theatre and editorials magazines such as 'Runner's Brazil' (2014).

Associate Artists and Collaborators



Previous Productions

"THE CITY"

directed by Andres Velasquez
(work-in-progress)

Feb 2015 - Pleasance Theatre, London UK
Jan 2015 - New Diorama Theatre, London UK
"great physicality blended with storytelling"
(audience's feedback)

"STREETS OF FREQUENCY"

directed by Ramon Ayres and Vinicius De Almeida Carvalho

Oct 2014 - Rich Mix (Latin-American Festival CASA),
London UK
"beautifully crafted and skilfully executed"
(audience's feedback)

Photos and Videos

VIDEOS

"The unparalleled Adventure of One Hans Pfaall"
(Full Show, Pleasance Theatre, Jul.2015, London UK)
conceived and performed by Vini Carvalho.

PART I <https://youtu.be/aZSmLEb5IOY>

PART II https://youtu.be/l8UgY6q_ufI

"The Unparalleled Adventure of One Hans Pfaall"
(‘get-in’ Pleasance Theatre Jul.2015, London UK)
filmed and edited by Eloise Carles.

<https://www.youtube.com/watch?v=TSBCWYDYTbc>

"The Streets of Frequency"

by Fool's Cap Theatre.

(CASA Festival 2014, London UK)

directed by Ramon Ayres and Vini Carvalho.

<https://youtu.be/8p6KvK3AZ5M>

Previous work with members of the company:

"Waiting for Ulysses"

by Theatre de l'Ange Fou

(Wisconsin USA, July 2013/2014)

directed by Steven Wasson and Corinne Soum.

<https://youtu.be/5a0g0JoH5gk>



PHOTOS

"The Unparalleled Adventure of one Hans Pfaall"
taken by Mathew Hodgkin at the Pleasance Theatre.
London UK, in July 2015

<https://flic.kr/s/aHskkRqkC2>

"The City"

taken by Mathew Hodgkin at the New Diorama Theatre.
London UK, January 2015.

<https://www.flickr.com/photos/132070765@N04/albums/72157652104256588>

"The Streets of Frequency"

taken by Alex Berton at the CASA Festival.
London UK, October 2015.

<https://www.flickr.com/photos/132070765@N04/albums/72157649275014584>

Despite the initial amount of technical requirements, the show can be quite flexible adapted to the technical conditions of the venue.

Technical Informations

CAST AND CREW

1 x performer
3 x technicians (from London) 2 males and 2 females
Accommodation: 2 double rooms

Extra:

1x lighting technician and operator (LOCAL)

PLAYING SPACE 4x5m (minimum) / 3m beam height

DURATION 75min

AUDIENCE SIZE 60-400

SOUND

1 x Sound Mixing Console
Speakers and Amps:
2x d&b Q7 loudspeakers / 1x return speaker
2x power sockets
1x wireless mic radio with receiver controllable from cabin (desirable): lapel or headset

PROJECTION

1x Video projector with shutter controllable from the cabin.
1x cable/entrance to connect to Mac or PC

EFFECTS

1x Look Solutions Unique Hazer
1 x Martin Jem Glaciator X-Stream (desirable)

REQUIREMENT

1x helium gas cylinder - 20L (3m³) (LOCAL - hire)

LIGHT

Instrument Schedule:

Fresnels:

7x 500w Acclaim
18 x 1000w Cantata Fresnel

Profiles:

8 x Source 4 Jr
10x Strand SL (25/50 lens)

LED

8x RGBA Spectra Battens
(or equivalent to light cyclorama)

Practicals:

2x 100w bulbs

Dimming:

58 ways of dimming required

Control:

Digital lighting desk capable of operating intelligent lighting.
Zero 88 Orb, ETC Ion, Smartfade ML, or equivalent.

MASKING

1x cyclorama fixed as backdrop (3x2m minimum)

RIGGING (flying) (adaptable to conditions of the venue)

1x book-dropping ('kabuki box')
from ceiling 'downstage left'
1x practical USL (20 kg), "Earth" –
lower sphere from rig on 'upstage left'
1x practical DSR (20 kg), "Moon" –
lower sphere from rig on 'downstage right'
1x practical (20kg), "Condenser apparatus" –
lower from rig on 'centre stage'

Props and set

MEASURES AND WEIGHTS



EARTH (sphere):

- 40cm diameter
- hard plastic material transparent and painted with spray and decorated with paper. Inside light bulb controllable from the tech cabin.



BASKET:

- 66x52x19cm / 4kg
- hard plastic material painted with spray, colour metal and black.



CONDENSER APPARATUS:

- 52x51x24cm / 3kg
- plastic material covered with foam and painted with spray, colour mates and black.



ASTRONAUT HELMET:

- plastic bucket covered with foam, spray a others
- 41cm height / 23cm diameter smaller base / 33cm diameter bigger base - 2xLED lights placed inside, plus the wireless and receptor.



ARTIFICIAL ROCK:

- 102x68x40cm / 10kg
- Colour: medium grey



MOON (sphere):

- 20cm diameter
 - hard plastic material transparent and painted with spray
 - inside light bulb controllable from the tech cabin
- (alternative option: acquire it from a house light shop, with similar measures and form)

Kindly supported by



Supported using public funding by
**ARTS COUNCIL
ENGLAND**



RYAN'S BAR

